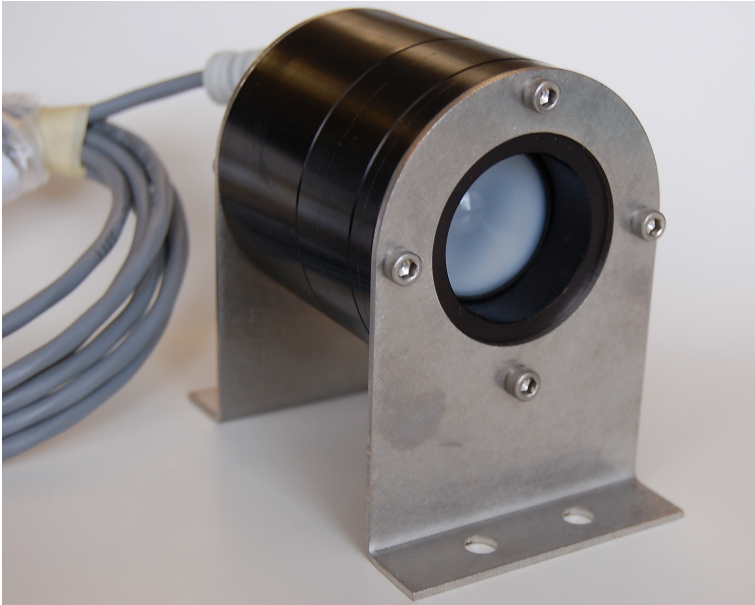


IR100 Infrared Temperature Sensor



- Easy to mount
- Durable Design
- Fast response time
- Sensing Temperature -70 to 380C

The **IR100** is pre-calibrated and easy to use. It is a simple point and shoot device. The emitted infrared energy is focused through a fresnel lens and onto an IR receiver. There are numerous applications where a non-contact temperature approach is required; road surface for Snow and Ice control, manufacturing processes, agriculture frost sensing, paint, paper, plastic processes and many others.

Specification:

Supply voltage: 10-32 vdc

Operating Temperature: -40C to +85C

Output: PWM signal, 0-5 vdc, current sinking

Temperature sensing span: -70C to +350C

View angle: 20 degrees, 4" spot diameter with each foot of range

Fresnel lens to help focus the infrared energy (IR)

Enclosure: Anodized aluminum, 3 sections with o-rings between each section

Resealed lens to help keep dirt out. Stainless steel brackets with U-bolts for secure mounting to a station.