

EH200 Electro-hydraulics controller OEM version



- ❑ **Field programmable**
... modify all settings from the built in user interface
- ❑ **Direct hydraulic drive**
... built in PWM current controlled valve drivers
- ❑ **Full featured**
... 12 bit A/D, RS232, 32K flash memory, digital inputs, 10-32vdc
- ❑ **Compact design**
... 4" x 6" x 1" fits into the tight panel designs

The EH200 is a versatile electronic module for controlling electro-hydraulic systems. The EH200 offers the OEM designer an array of standard features with which to implement a custom control system. The EH200 provides digital inputs, analog inputs, PWM current controlled valve drive outputs, liquid crystal display, user keypad, RS232 port, 32K flash memory, 8 and 12 bit A/D, voltage reference, and more. Our factory engineers can quickly and efficiently help implement your custom control requirements.

Typical Applications:

- ◆ Vehicle steering, guidance, speed control, speed matching, true units, MPH, RPM, FPM, etc.
- ◆ Servo control, process control, master-slave and ratio-metric speed control, electronic gearbox
- ◆ PLC interface, sensor and instrumentation readouts, telemetry via RS232
- ◆ Material handling, conveyor control, pick-n-place, auto-leveling, and many more

The four digital inputs work with most current and voltage devices, such as limit switches, pulse counters, photo-eyes, panel switches or I/O signals from a PLC. The four analog inputs can be easily re-configured to work as digital inputs for reading switches. The six output valve drives offer, sink or source, current control, PWM or solenoid drive and H-bridge.

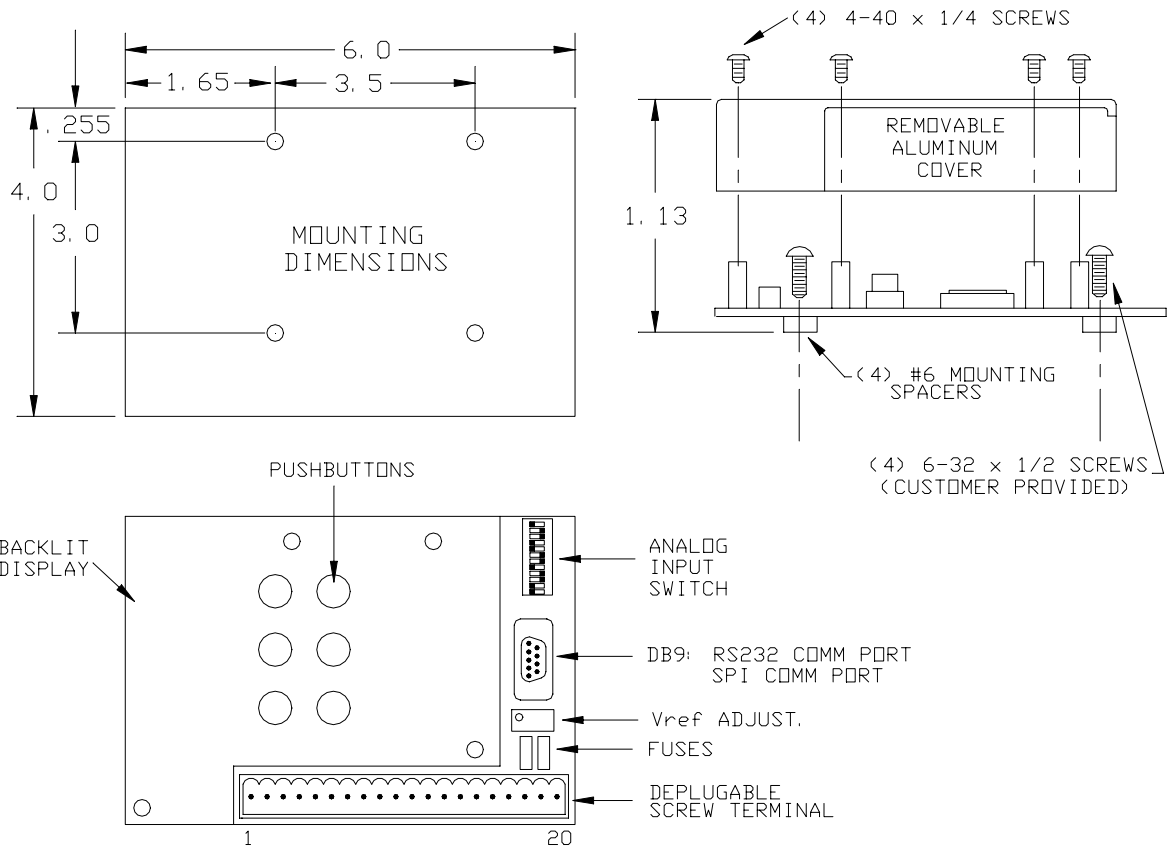
General Specifications:

- ◆ Operation: 10-32 VDC, -40° to +85° C, size 4" x 6" x 1", enclosure cover, not sealed
- ◆ Outputs: (6) FET drive outputs, 2.5 amps each: (4) current controller sourcing, (2) open loop sink or source, (1) optional H-bridge configuration
- ◆ Inputs: (4) digital inputs, device sourcing, opto-isolated, 2 ma sensitivity (4) analog inputs; (2) 12 bit and (2) 8 bit A/D; 0-5v, 0-10v, 4-20ma, selectable
- ◆ User interface LCD, 2x16 backlit, supertwist and 6-key data entry, optional finger pot.
- ◆ Alarm: Piezo audio beeper for operator information
- ◆ Wiring interface: 20 position de-pluggable screw terminal, RS232C and SPI via DB9 connector
- ◆ Logic/memory: CPU, 8Mhz, 12K application memory, 32K Flash memory
- ◆ Options: 2 axis accelerometer for leveling applications

EH200

ALL DIMENSIONS ARE IN INCHES

MECHANICAL



ELECTRICAL

